

Electrical Properties:

Frequency Range: 2.4~2.5 GHz
 Impedance: 50 nominal
 VSWR: <2.0:1
 Gain*: 5 dBi
 Radiation: Omni
 Polarization: Vertical

* Gain is measured without magnet base

Mechanical Properties:

Antenna:

Whip: Polyurethane (black)
 Connector: SMA plug black chrome plating

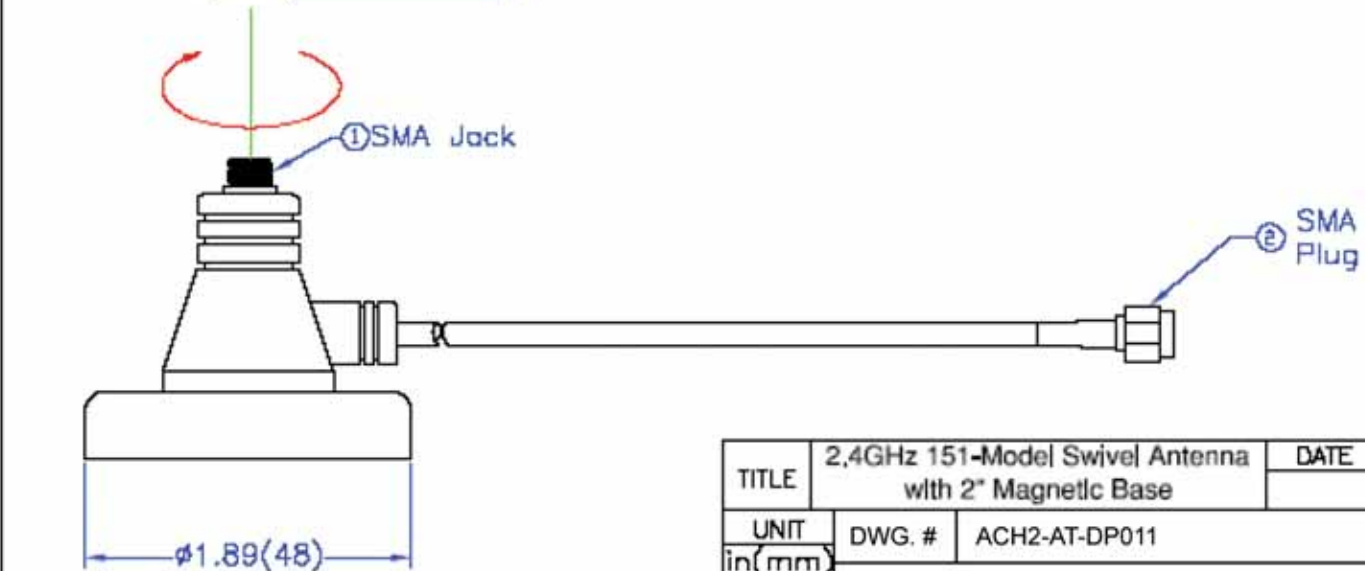
Magnet Base:

Connector1: SMA jack gold plating
 Cable: M17/133-RG316
 Cable Length: 14in. (355mm)
 Connector2: SMA plug gold plating
 Nearson P/N: 19-03L-TGG

Mounting Force: 5.5 lb (3.3kg)

Operating Temp: -20°C to +65°C

Storage Temp: -30°C to +75°C



TITLE	2,4GHz 151-Model Swivel Antenna with 2" Magnetic Base		DATE	SHEET
UNIT	DWG. #	ACH2-AT-DP011		1 OF 1
in (mm)				A4
SCALE	QUATECH, INC.			
1 : 1.2				